

Growth inhibitors on calcite

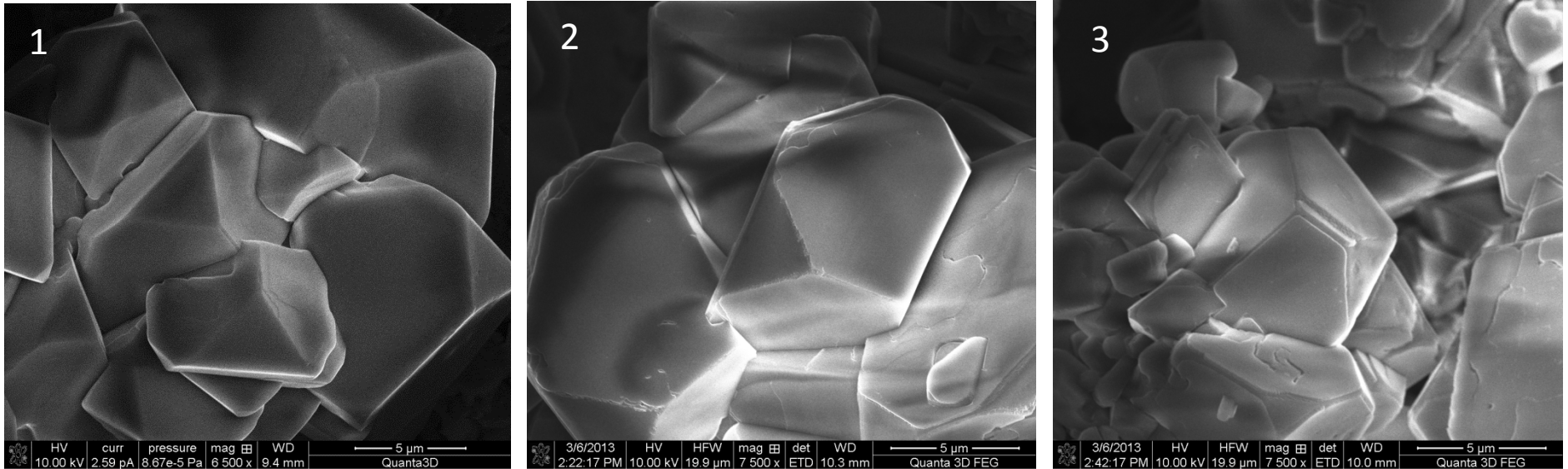
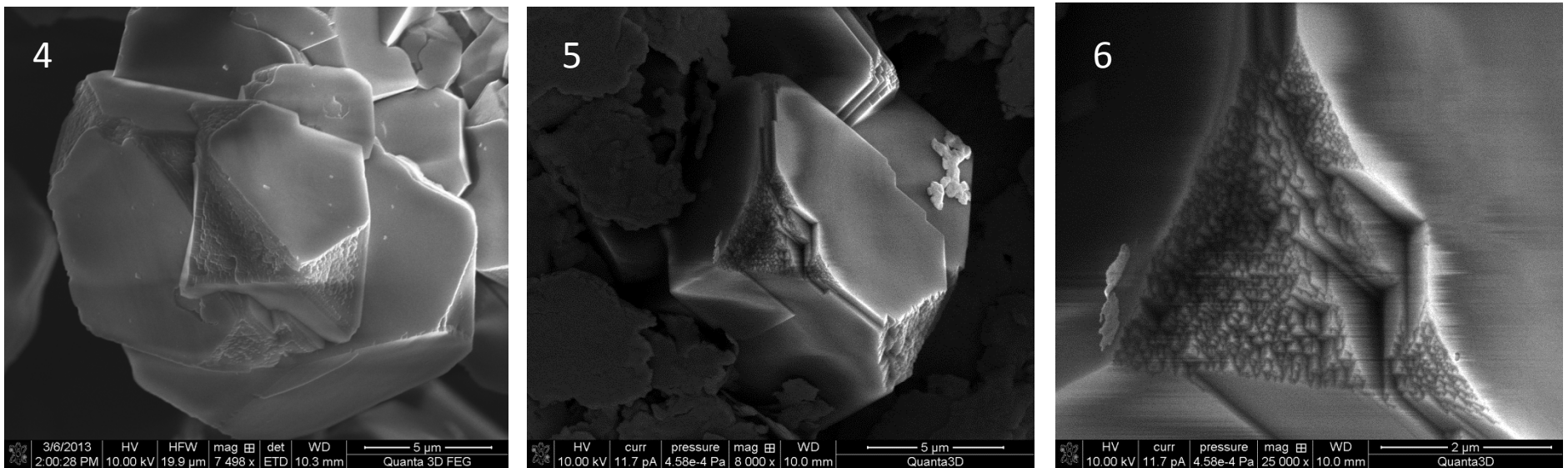


Fig. 1: Calcite seed crystals prior addition to the solution media. They present smooth and flat surfaces and sharp edges. Fig. 2 and 3: Calcite seed crystals after addition to the growing solution. Growth occurs with layer by layer accumulation and edges roughened slightly.



Calcite surfaces after aspartate (Fig. 4) and glycine (Fig. 5) addition: step edges become visibly roughened. Fig. 6 shows in detail the morphology of the step edges.