

Growth inhibitors on calcite

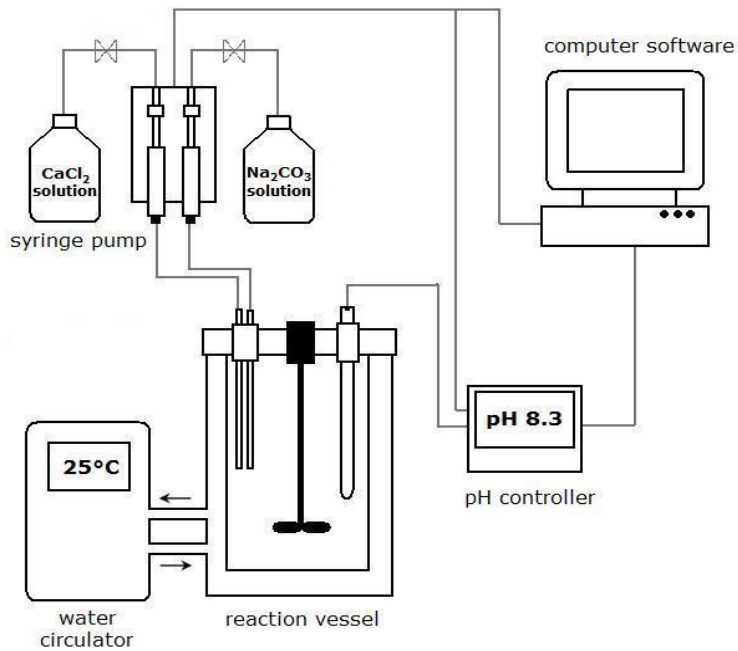


Figure 1: Constant composition method experimental setup.

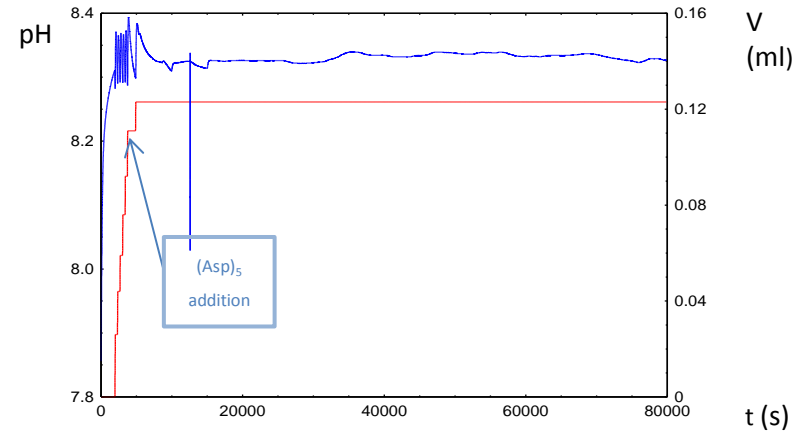


Figure 2: Precipitation experiment where polyaspartic acid with 5 Asp units was introduced. It strongly affects calcite growth rate, which drops to zero, indicating complete inhibition.

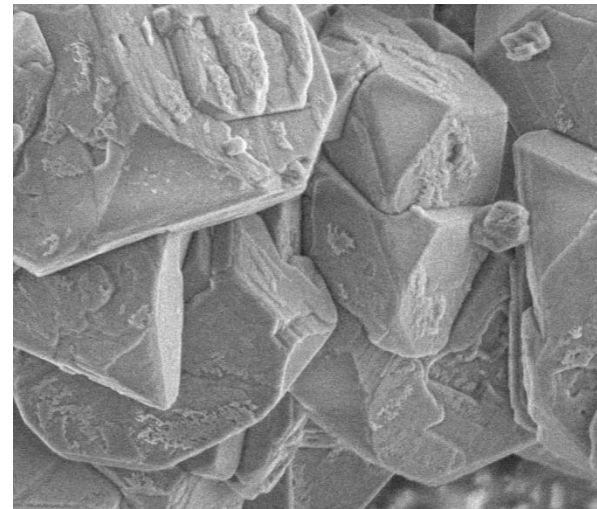


Figure 3: SEM image of calcite sample after addition of polyaspartic acid with 5 Asp units. The edges are stabilized by the polyamino acid.